

# RP70

***Rugged and Professional***





# 1. RP70 Intro

**The RP70 is 7 inch professional rugged tablet running with Windows 10 IoT Enterprise platform. It is born to establish a new form factor between handy smartphone and tablet PC. More and more, professionals require larger display terminals while keeping compact and light weight design. Maximizing portability, 7 inch is perfect size for professionals to view PDF document and enter data conveniently in the field. The RP70 is as light as 600 grams and 19mm thin, smoothly slipped into pocket of professionals' uniform.**



## 2. Design

### Truly Handy and Pocketable

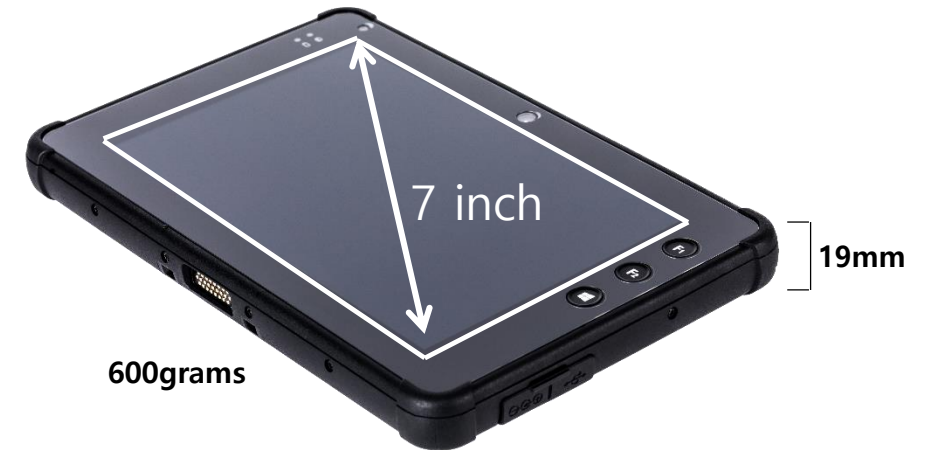


Pocketable Size



**RP70 has 19mm thickness competitively slimmer than average rugged tablet PC. With light weight of 600 grams, it provides utmost portability and can be slipped smoothly into the pocket of professionals' uniform.**

**7 inch display is perfect for professionals to view PDF document and enter data conveniently in the field.**





## 2. Design

### Born to Survive in Extreme Environment

Anti-shock resistant : 1.2meter drop certified

IP 65 sealing

Operating Temperature of -20° C ~ +60° C

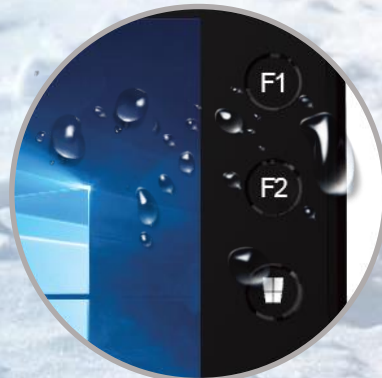
Anti Shock Resistant



Four edge rubber bumper



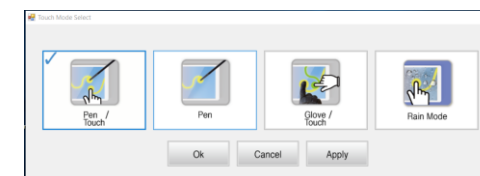
Reliable hardware keys





## Rainmode

**Rainmode** enables RP70 to sense precise point of your finger during rain, and snow without erroneous input.





## Your outdoor tablet



## 2. Design



## Your indoor PC

GEN2WAVE



## 2. Design

Professional Vehicle Cradle with wide extension capabilities  
Ethernet, HDMI, Serial, 4 USB Port  
Flexibility of Customization



# 3. Advantages



(1) Excellent Outdoor Readability,  
even in direct and sharp sunlight



### 3. Advantages





## (2) Fine tip stylus with Highly Responsive Display

## 3. Advantages

The highly responsive touch screen enables precise and accurate point on the screen  
The fine tip stylus is perfectly working especially in GIS (Geographic Information System) applications.





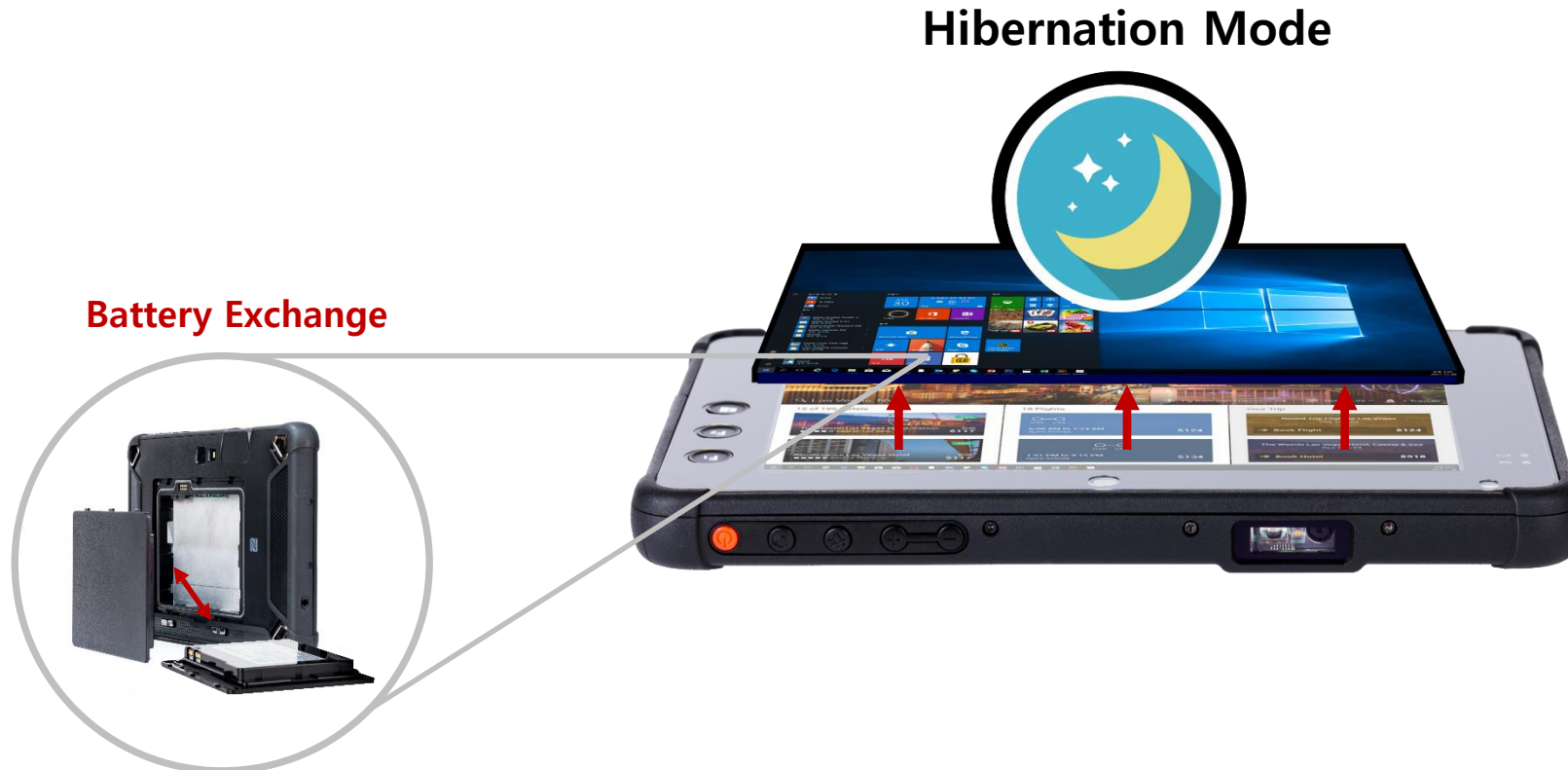
# 3. Advantages

## (3) User Removable Battery without reboot

User removable battery is great benefit of the RP70.

Thanks to that, professionals can conduct extra-long hour task out in the field.

The battery is conveniently exchangeable without reboot



#### (4) The latest powerful platform

Windows 10 IoT Enterprise

Intel CherryTrail 1,9GHz Quad-Core Processor

4GB RAM, 64GB (128GB optional) ROM

### 3. Advantages



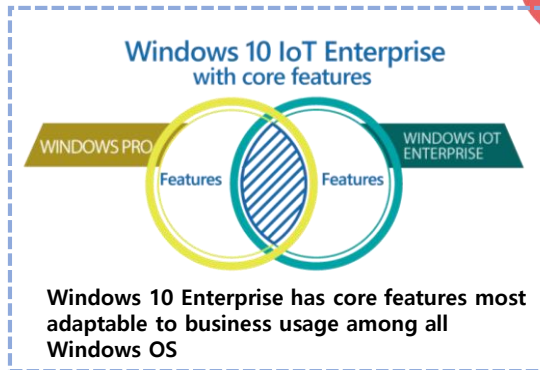


## (5) Windows 10 IoT Enterprise

The most advanced OS for Enterprise use with brilliant advantages :

### Security

Sensitive information is secure with Windows 10 IoT Enterprise. Devices can be locked down to prevent users from accessing system settings and tampering with user interfaces.



### Licensing & Activation

Windows 10 IoT Enterprise is simple to activate and easy to maintain.

### Customization

As the successor to Windows Embedded Standard, Windows IoT Enterprise offers the same functionality found in Windows 10 while excluding unwanted user-facing features. This allows digital signage vendors to provide a predictable and consistent end-user experience across multiple device platforms.

## (6) Built-in Professional 2D Imager and NFC Reader Scanner (Honeywell) and NFC Reader

## 3. Advantages







### 3. Advantages


- Auto Start:** Starts automatically as soon as tablet OS starts
- Auto Scan:** Scan mode which enables you to scan without pressing function button

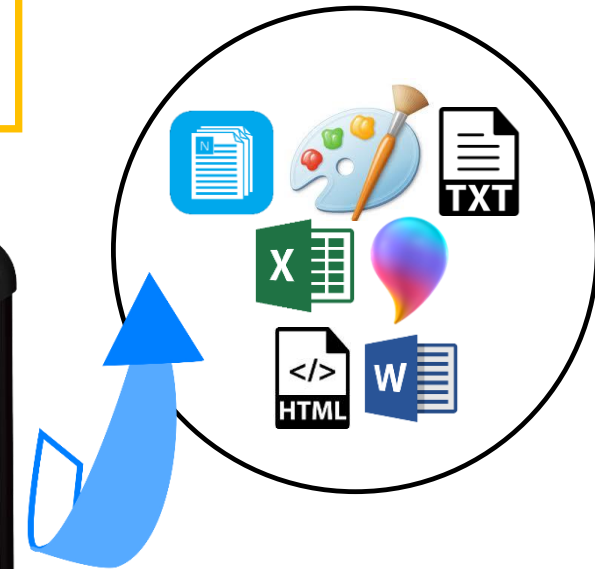
## Scanned Barcode Editing

  
0<sup>0</sup>12345<sup>7</sup>

A 0 1 2 3 4 5 6 7 8 9 B

 MaxiCode  
 $D > .06^\circ$   
12V0116249/211<sup>+</sup>  
IPI 234567~

 TCIF Linked Code 39  
SABCDTETAG09150007<sup>8°FCT</sup>

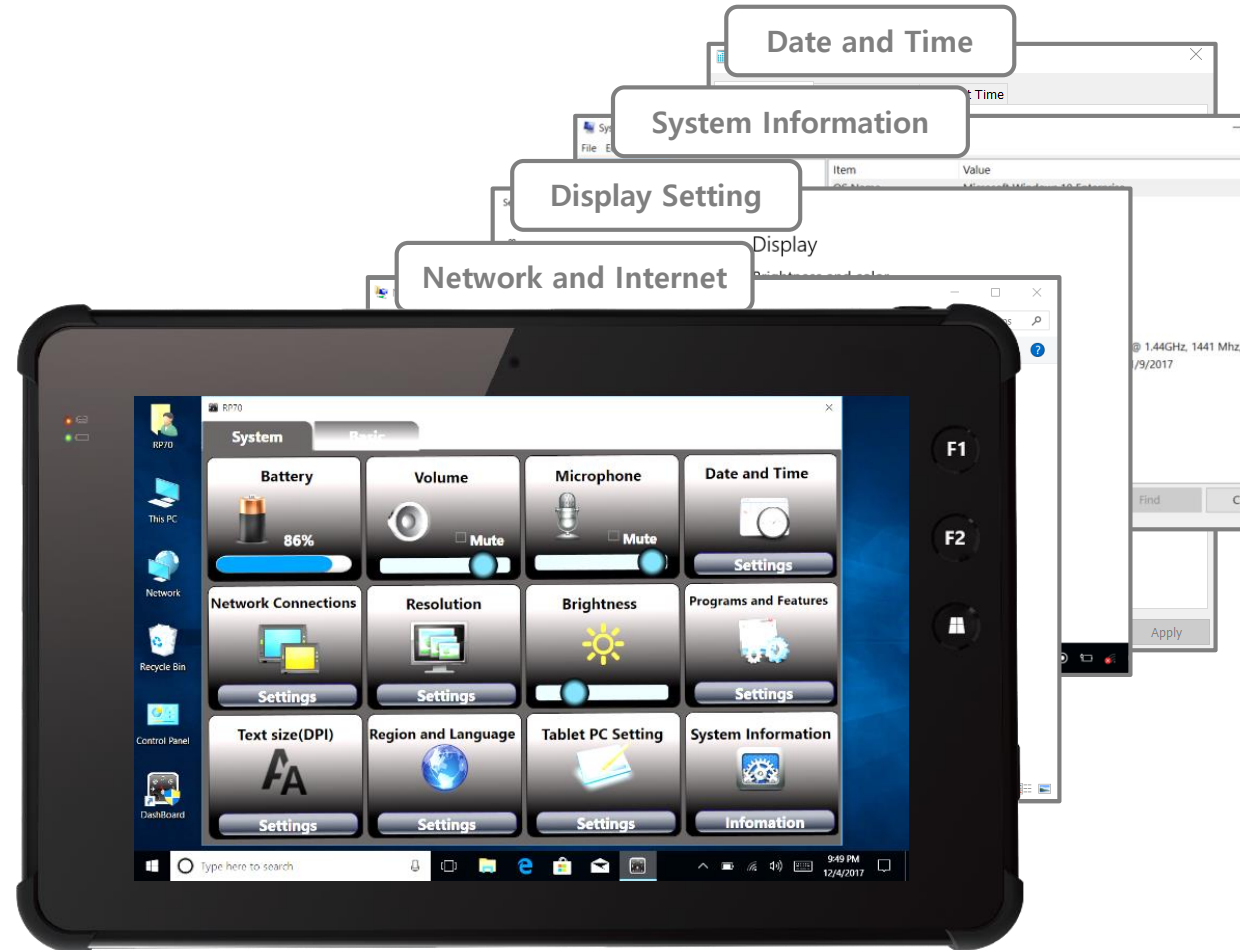


## (8) Efficient & Convenient Setting Dashboard

intuitive and easy setting tool

with less depth through Windows

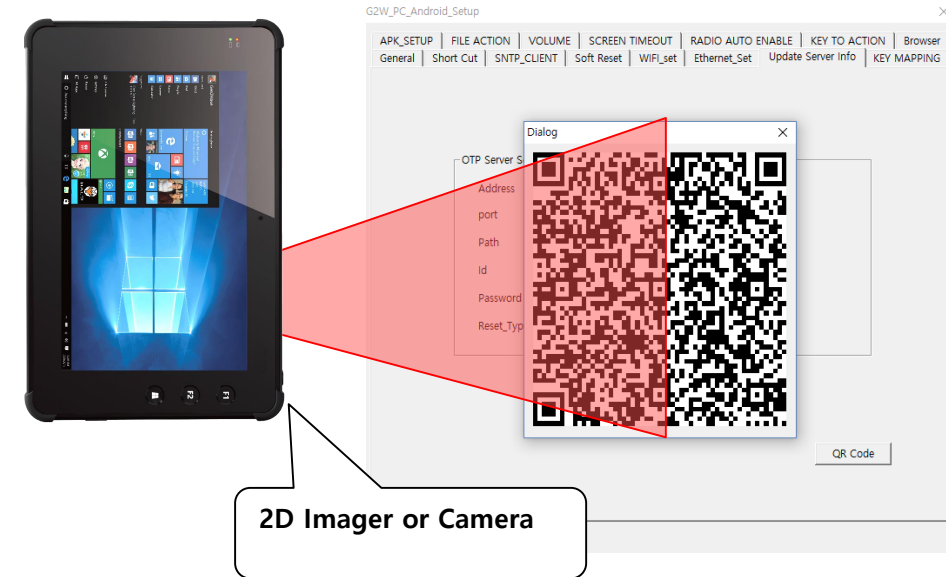
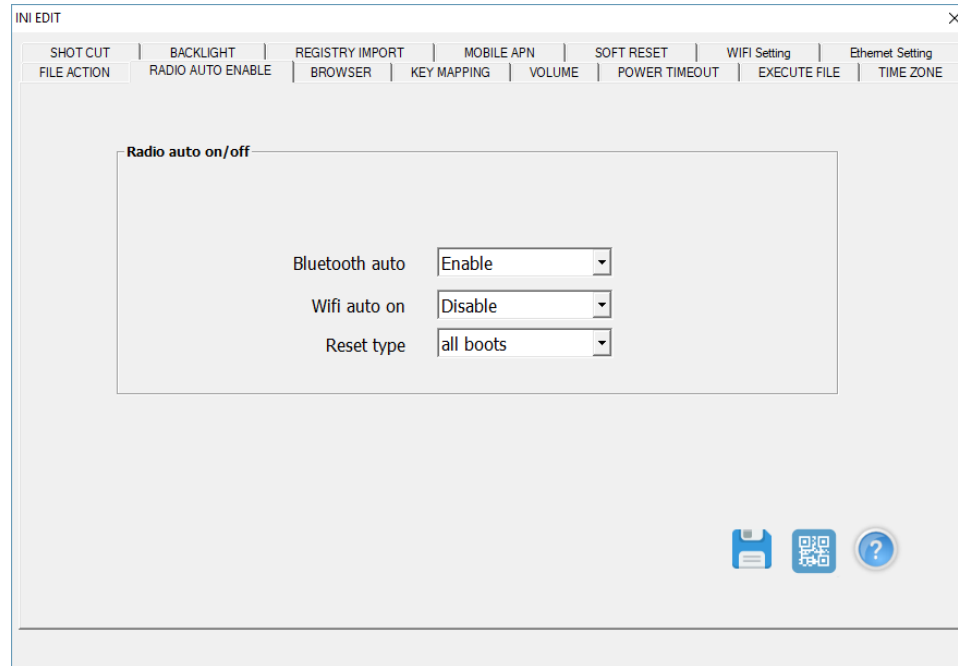
## 3. Advantages





## (9) Autose tup

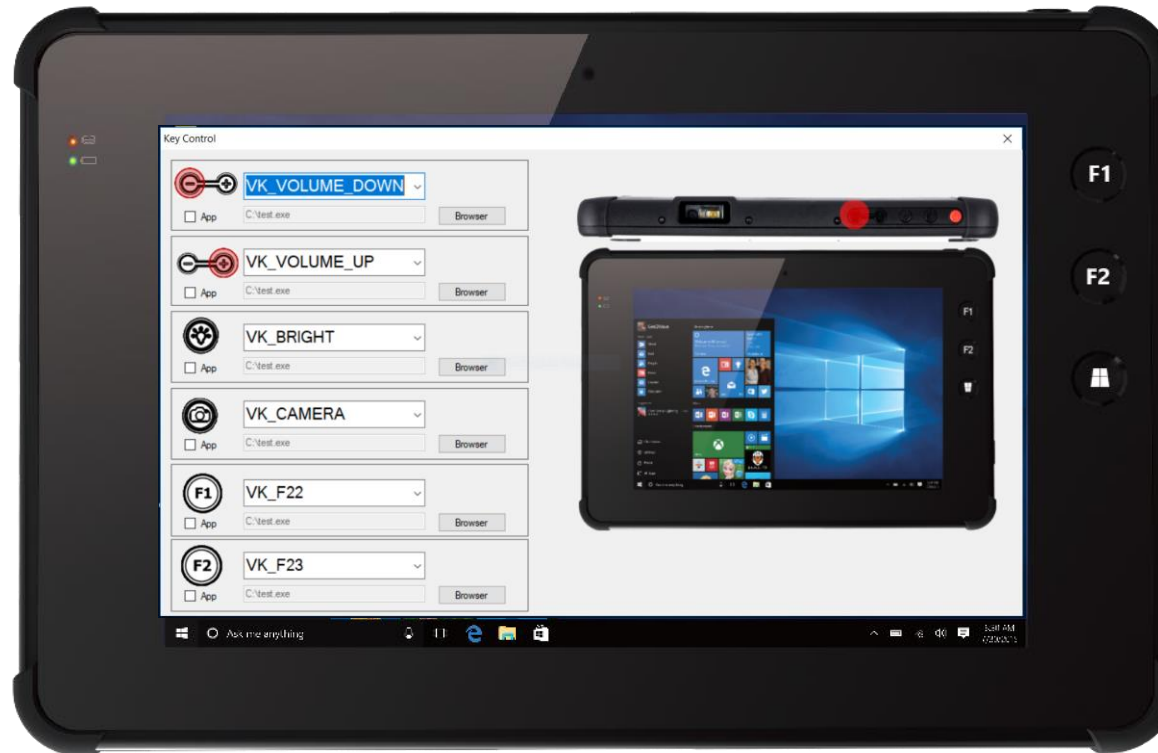
Autosetup has easy UI to pre-stage RP70 settings such as ethernet setting, mobile APN, hardware keys, key mapping ..etc. You can install several RP70s at once with Autosetup.



1. Scan QR code
2. Automatic connection to FTP server
3. Automatic download for Auto Setup & APK
4. Automatic installation

## (10) Easy Key Mapping & Intuitive UI

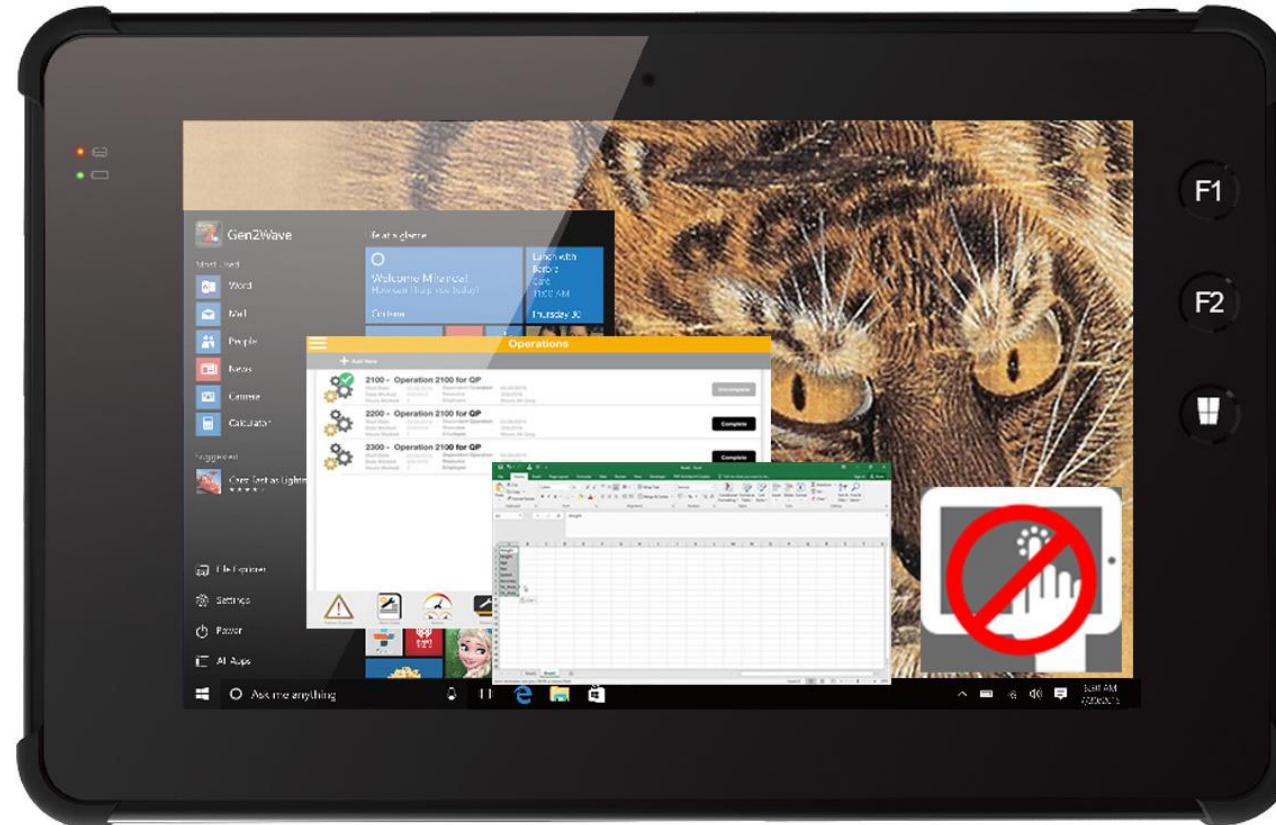
You can remap the 6 different hardware keys of RP70 instantly. Gen2Wave offers convenient UI for Key Mapping. You can also mass-set and map number of RP70s' keys with Autosetup.





## (11) Screenlock Mode

Keep your work and programs safe while your concentration is away from RP70.  
Screenlock mode keeps your work on process, while preventing erroneous input.



# 4. Specification

## Performance Characteristics

<b>CPU</b>	INTEL Cherry Trail Quad Core X5-Z8350 Processor (1.44GHz up to 1.9GHz / 2MB Cache / 64bit / SDP 2W)
<b>OS</b>	Windows® 10 IoT Enterprise
<b>Memory</b>	4 GB DDR3L-1600MHz 64GB EMMC (128GB optional)  USB Host 3.0, A type, super speed (5Gbit/s)
<b>Communication Interface</b>	Desktop Cradle Interface : USB 2.0 A type Host 3ea, HDMI 2.0 1ea, Serial 1ea, Ethernet 1ea  Extension 10pin connector : supporting USB and Serial interface

## Battery(5600mA) Performance

<b>Standby Time</b>	100 hours / 5,600mAh standard battery
<b>Video Streaming Time</b>	5 hours / 5,600mAh standard battery 8 hours / 5,600mAh standard battery (keep turning on the LCD module and the communication module)
<b>Charging time</b>	5hours / 5,600mAh standard battery

## Physical Characteristics

<b>Dimensions</b>	131mm H X 203mm W X 19mm D
<b>Weight</b>	600 gram with 5,600mAH standard battery
<b>Display</b>	7 Inch / WXGA (800x1280), 700 nits (cd/m <sup>2</sup> )
<b>Input</b>	3 Front keys, 5 Side keys (Including 2 programmable keys)
<b>Battery</b>	Standard : 5,600mA/h, 3.7V, Li-polymer Extended : 10,200mA/h, 3.7V, Li-polymer
<b>Expansion Slot</b>	MicroSDXC / Up to 2 TB cards supported
<b>Audio</b>	Dual Speaker / Receiver / MIC  4G LTE / HSPA+ / GSM / GPRS
<b>Wireless (WWAN)</b>	EU Frequency band 4G LTE : 800, 900, 1800, 2100, 2600MHz 3G HSPA+ : 900, 1800, 2100MHz 2G GSM/GPRS : 900, 1800MHz
<b>Bluetooth</b>	Bluetooth 4.0 + HS (BT Headset support)
<b>Wireless LAN</b>	802.11 a/b/g/n/ac
<b>GPS</b>	Embedded A-GPS
<b>Notification</b>	Charging status LED, Power on/off LED
<b>Scanner</b>	2D Imager (Honeywell N3680)



## User Environment

<b>Sealing</b>	IP65
<b>Drop Spec.</b>	1.2M drop to concrete. 2 drops per 6 sides
<b>Operating Temperature</b>	-20 °C ~ +60 °C
<b>Storage Temperature</b>	-30 °C ~ +70 °C
<b>AC Power</b>	Input : AC 100 ~ 240V, 50 ~ 60Hz Output : DC +5.0V, 5A
<b>Relative Humidity</b>	Non-condensing, 93%

## Camera

<b>Resolution</b>	8.0 megapixel with Auto Focus (Rear Camera) 2.0 megapixel with Fixed Focus (Front Camera)
<b>Illumination</b>	User controllable flash
<b>Lens</b>	Auto Focus (Rear Camera)

## Interactive Sensor Technology

Motion-sensor: 3-axis accelerometer that enables motion-sensing applications for dynamic screen orientation  
E-compass : To tilt compensated electronic compass utilizing an accelerometer and a magnetometer.  
Ambient light sensor : To adjust the screen brightness automatically based on the available light.

## Regulatory

<b>Environmental</b>	RoHS-compliant
<b>Electrical Safety</b>	IEC 60950-1: 2005 (2nd Edition) and/or EN 60950-1:2006
<b>WLAN &amp; Bluetooth</b>	ETSI EN300328:V1.7.1(2006-10)
<b>EDGE/GSM 900/DCS 1800</b>	3GPP TS 34.123 GCF approved module ETSI EN301 511:V.9.0.2(2003-03) ETSI TS 151 010-1 :V7.9.0(2008-04)
<b>HSDPA</b>	ETSI EN 301 908-1&2:V.3.2.1(2007-5) 3GPP TS 25.102 V8.0.0 (2008-05)
<b>RF Exposure</b>	EN 60950-1: 2006+A11:2009 , EN50360: 2001, EN62209-1: 2006 and IEEE1528-2003
<b>EMI/RFI</b>	ETSI EN 301 489-1 V1.8.1(04/2008) ETSI EN 301 489-7 V1.3.1(11/2005) ETSI EN 301 489- V1.3.1(04/2008) ETSI EN 301 489-24 V1.4.1(09/2007)
<b>Laser Safety</b>	IEC 60825-1:1993+A1:1997+A2:2001, EN 60825-1:1994+A2:2001+A1:2002 "Safety of Laser products"

## 2D Image Scanner (Honeywell N3680, H/W Decoder)

<b>Sensor</b>	CMOS sensor with 640 x 480 pixel resolution
<b>Illumination and Aiming</b>	White LED illumination; red LED dot aimer
<b>Typical Frame Rate</b>	30 frames per second
<b>Motion Tolerance</b>	Up to 10cm/s for 13mil UPC at optimal focus
<b>Field of view</b>	Horizontal 37.8°, Vertical 28.8°
<b>Scan Angles</b>	Tilt: 360°, Pitch $\pm 45^\circ$ , Skew: $\pm 45^\circ$
<b>Symbol Contrast</b>	35% minimum print contrast ratio

### Standard Reading Range

<b>SYMBOLGY</b>	*TYPICAL RANGE
<b>100% UPC</b>	55 mm to 280 mm (2.1 in to 11.0 in)
<b>5MIL CODE 39</b>	61 mm to 130 mm (2.4 in to 5.1 in)
<b>20MIL CODE 39</b>	60 mm to 380 mm (2.4 in to 15.0 in)
<b>6.7MIL PDF417</b>	60 mm to 125 mm (2.4 in to 4.9 in)
<b>10MIL DATA MATRIX</b>	60 mm to 130 mm (2.4 in to 5.1 in)
<b>20MIL QR</b>	50 mm to 230 mm (2.0 in to 9.0 in)

\* Typical performance may be impacted by barcode quality and environmental conditions

## Peripherals and Accessories

<b>Desktop cradle (1slot)</b>	Device charging slot / 1ea Additional battery charging slot / 1ea Ethernet port / 1ea HDMI 2.0 Full size type A / 1ea (High definition Multimedia Interface) USB Host 2.0 / 3ea Serial RS232C / 1ea
<b>Car Cradle</b>	Device charging slot / 1ea Ethernet port / 1ea HDMI 2.0 Full size type A / 1ea (High definition Multimedia Interface) USB Host 2.0 / 2ea Serial RS232C / 1ea Power input (DC-IN) / 1ea
<b>Electrical Safety:</b>	IEC 60950-1: 2005 (2nd Edition) and/or EN 60950-1:2006
<b>EMI/RFI:</b>	EN 55022:2006 Class B EN 61000-3-2:2006 EN 61000-3-3:1995 +A1:2001+A2:2005



# 5. Application

## Field Service





## Retail Shops

- Multiplex shopping malls
- Drug stores



Staff enablement



Inventory management



Price Strategy



Personal Shopping





# Transportation



Courier Express  
Parcel



Retail Distribution



Mail Courier Service



Mass Transport





## Warehouse Management



Receiving



Put-Away &  
Replenishment



Inventory



Picking







**Sales Force Automation**  
RP70 works 24/7 for speedy process



## Law Enforcement

Traffic Law Enforcement

Parking Law Enforcement

Patrol Mobile Solution



# 6. Accessories & Package

Names	Description	Image
Standard Accessories	AC line cord & Power supply Stylus pen, Pen string Hand Strap	
Battery	Li-ion Polymer Battery  Standard 3.7V 5600mAH Extended 3.7V 10200mAH	
Professional Desktop Cradle	Device charging slot, Additional battery charging slot, USB Host 2.0, A type HDMI 2.0 Full size A type, Serial RS232C Ethernet port Lock to place tablet with stability Key to keep tablet safe.	
Professional Car Cradle	Device charging slot Cigar plug input power, Direct Input power, USB Host 2.0, A type HDMI 2.0 Full size type A Serial RS232C Ethernet port Lock to place tablet with stability Key to keep tablet safe. Two wheels to adjust angles of Display	